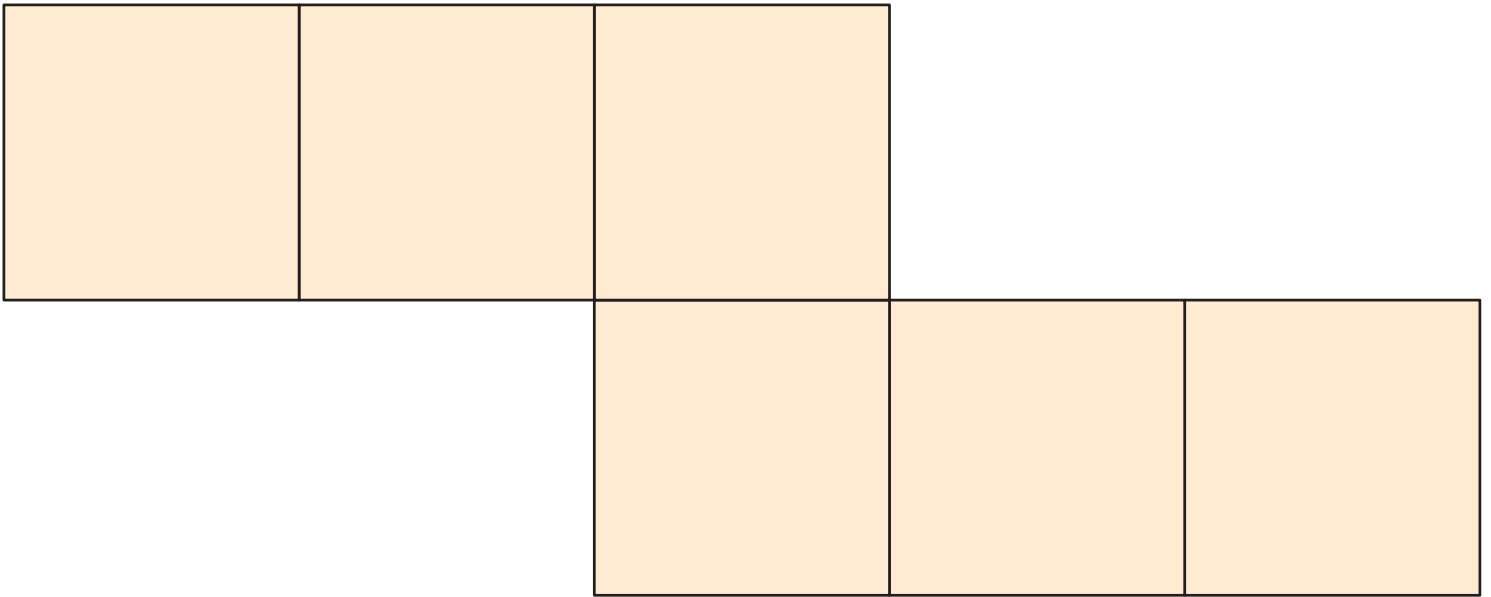
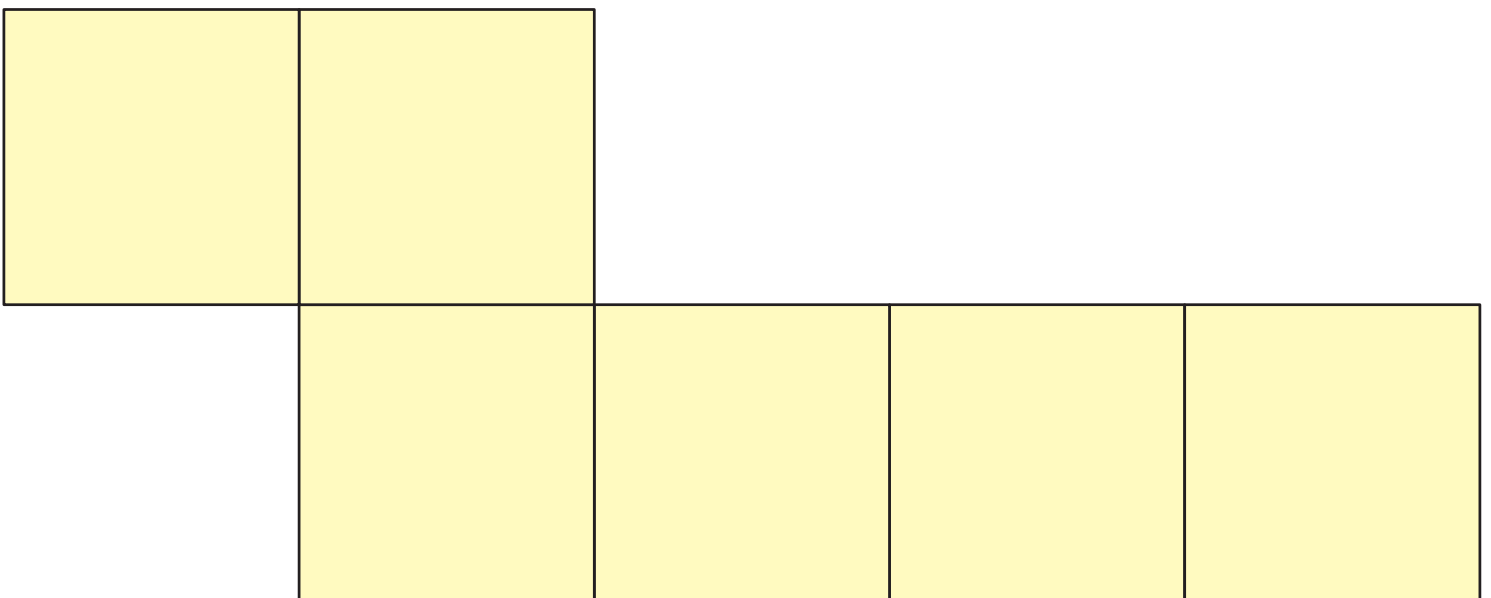


Shape Transformers: Forms That Fold Two Ways

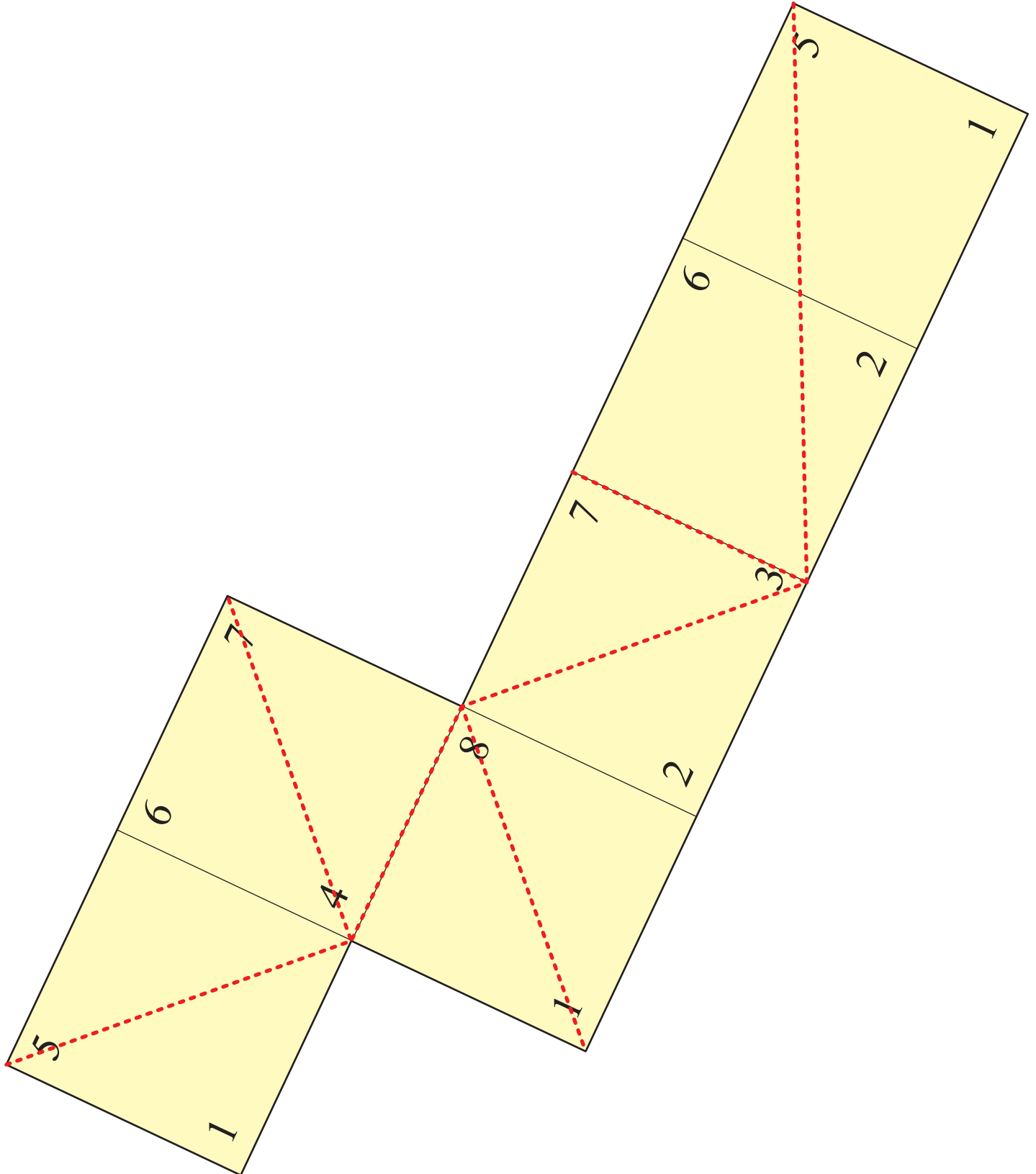
Joseph O'Rourke



Fold to Cube?

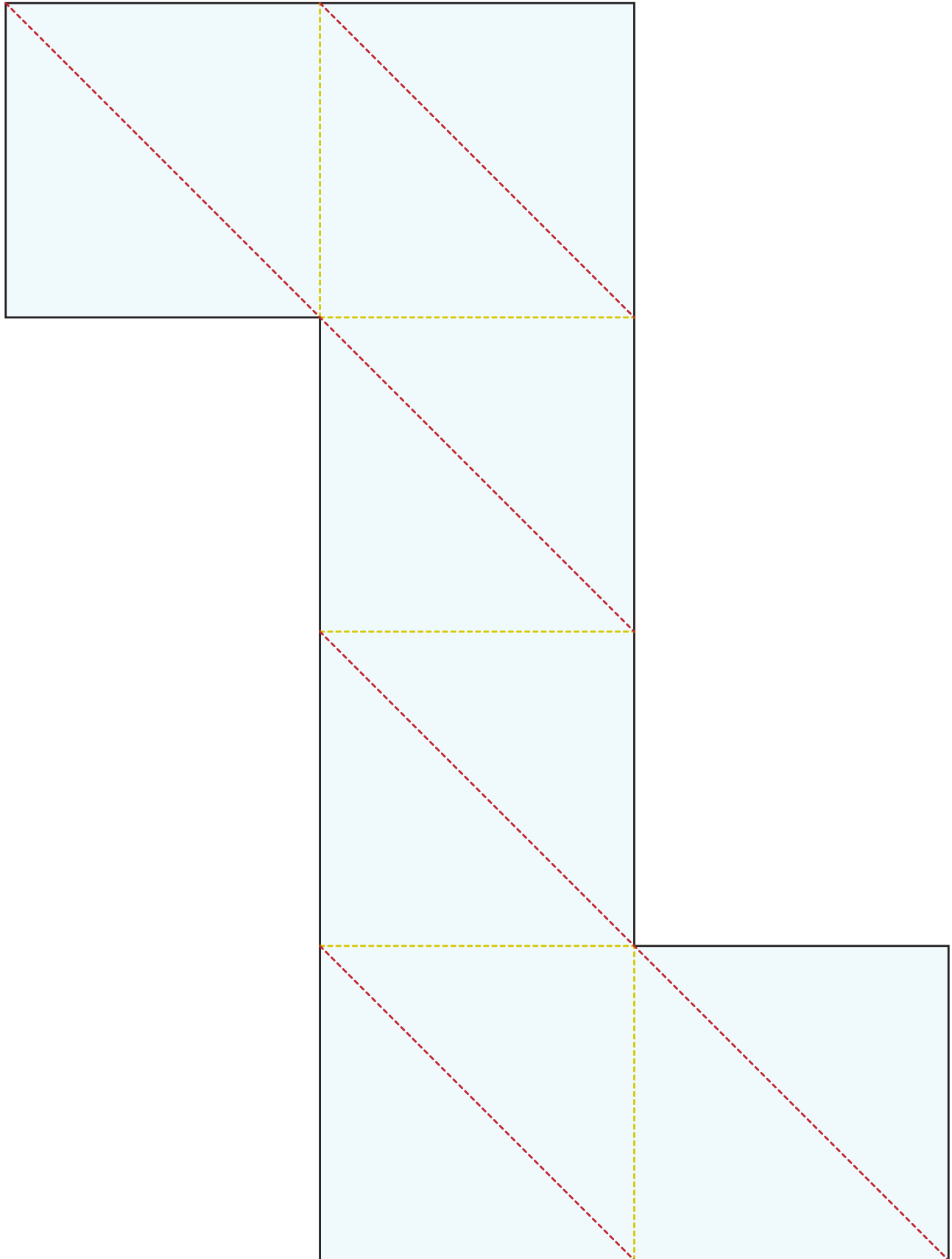


Shape Transformers: Forms That Fold Two Ways
Joseph O'Rourke



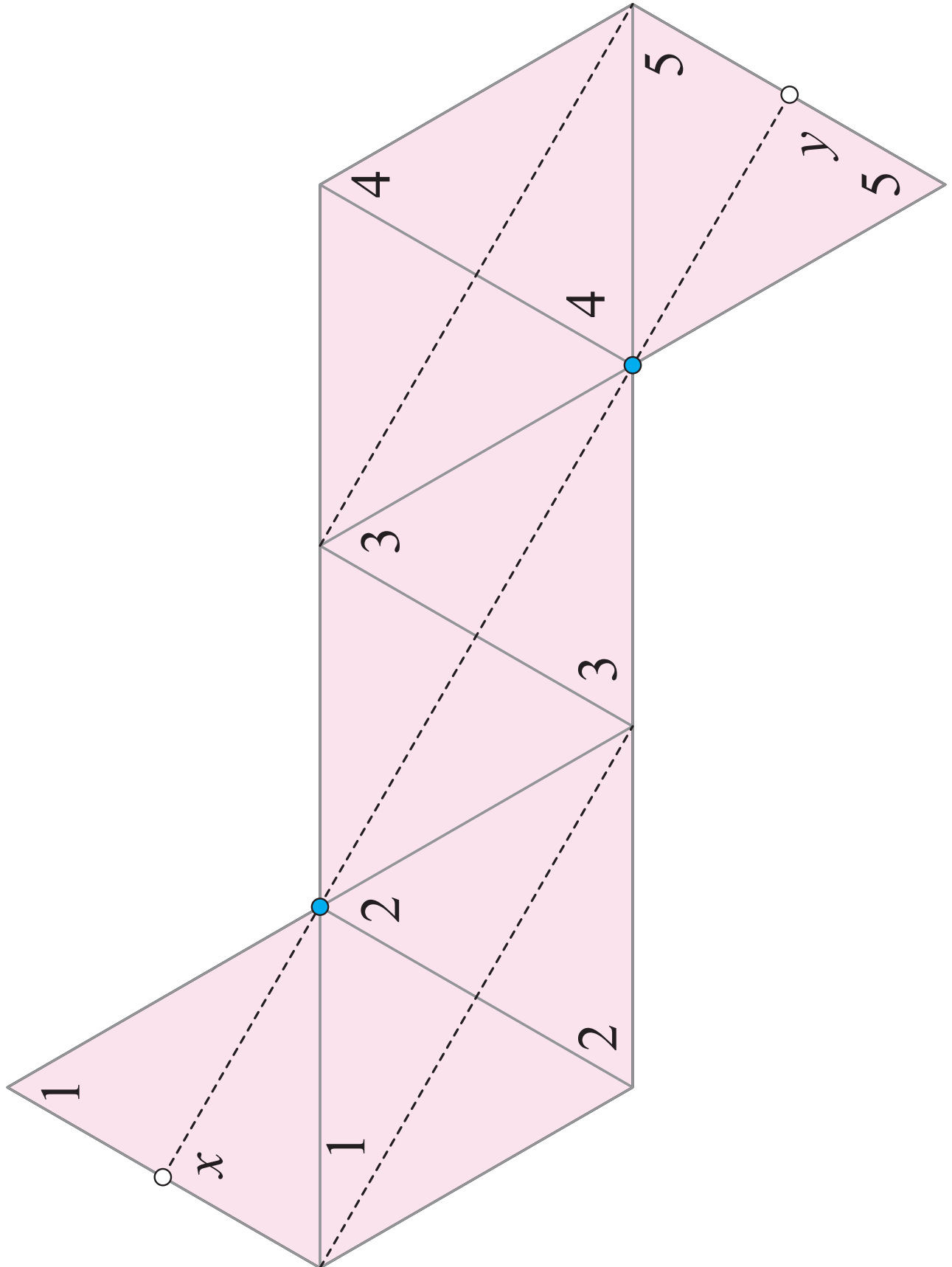
Shape Transformers: Forms That Fold Two Ways

Joseph O'Rourke



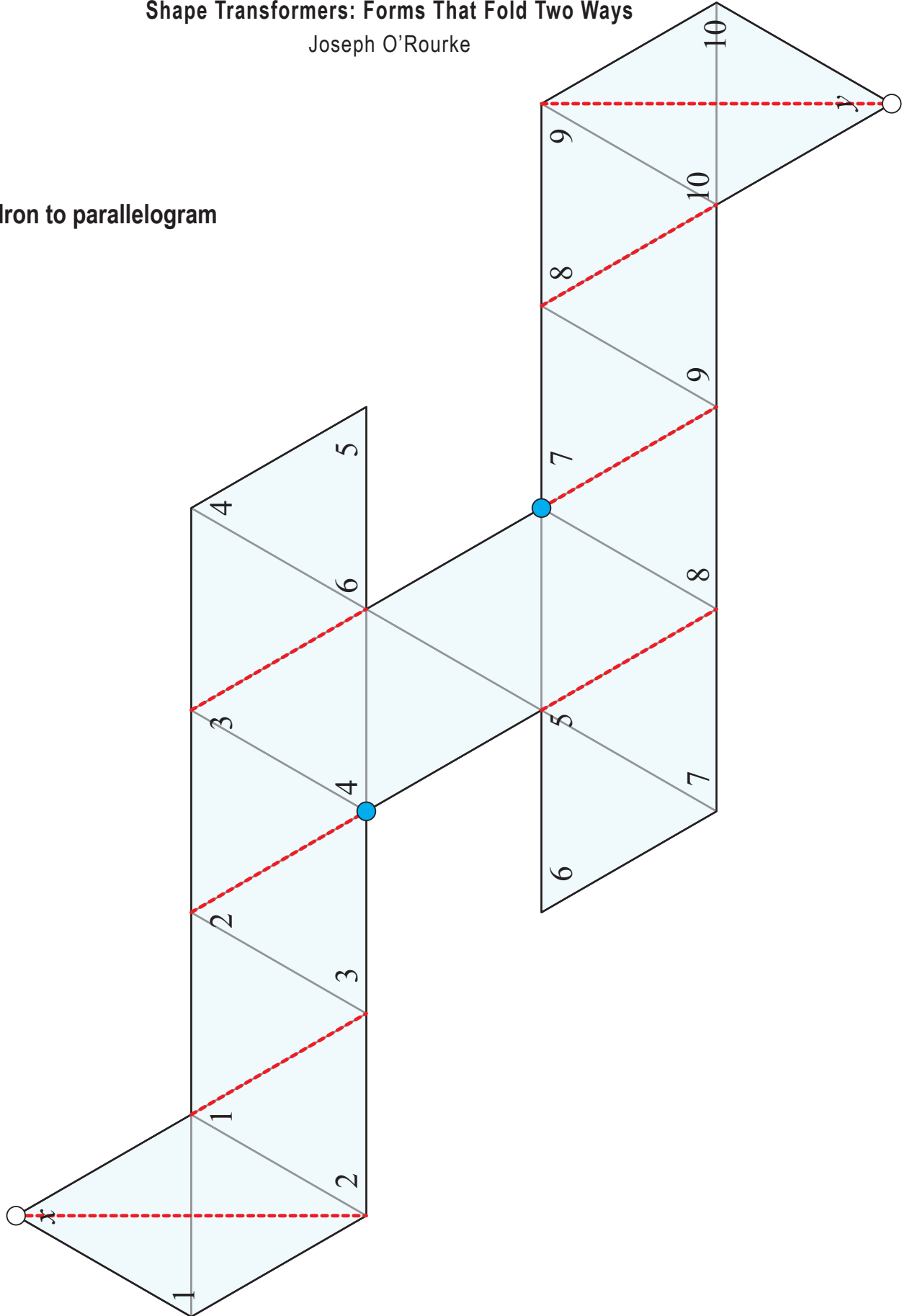
Shape Transformers: Forms That Fold Two Ways

Joseph O'Rourke



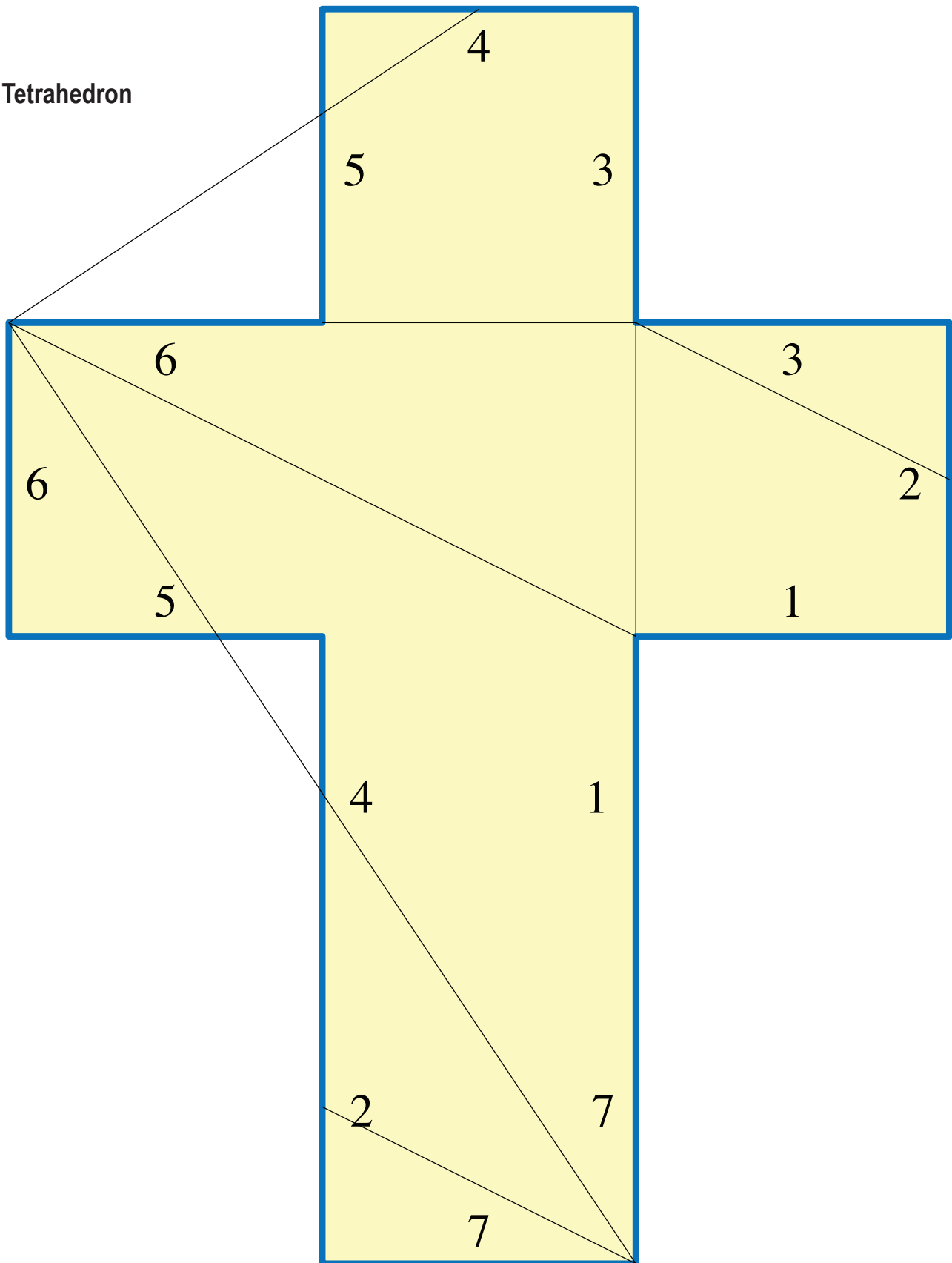
Shape Transformers: Forms That Fold Two Ways
 Joseph O'Rourke

Icosahedron to parallelogram



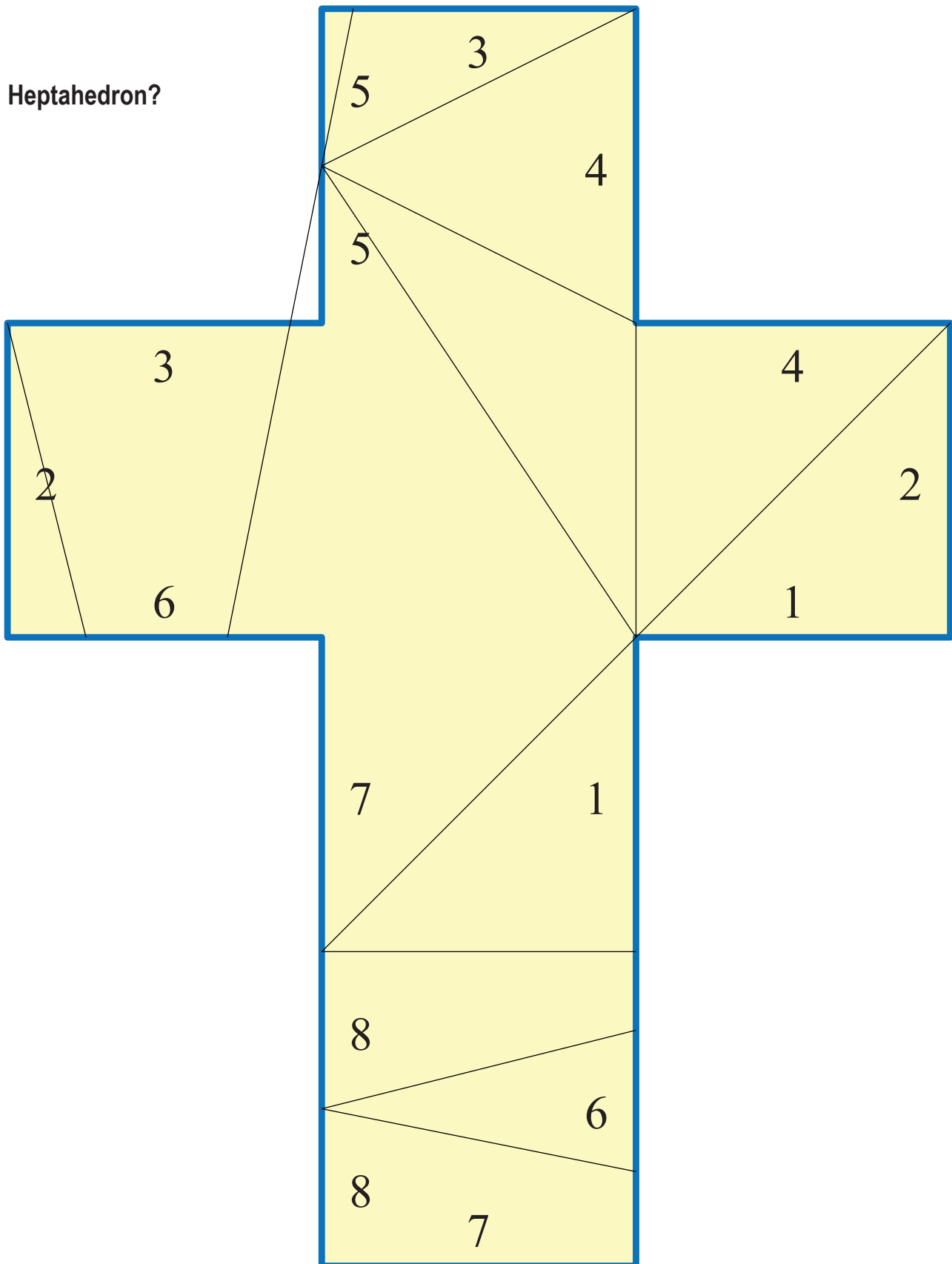
Shape Transformers: Forms That Fold Two Ways
Joseph O'Rourke

Tetrahedron



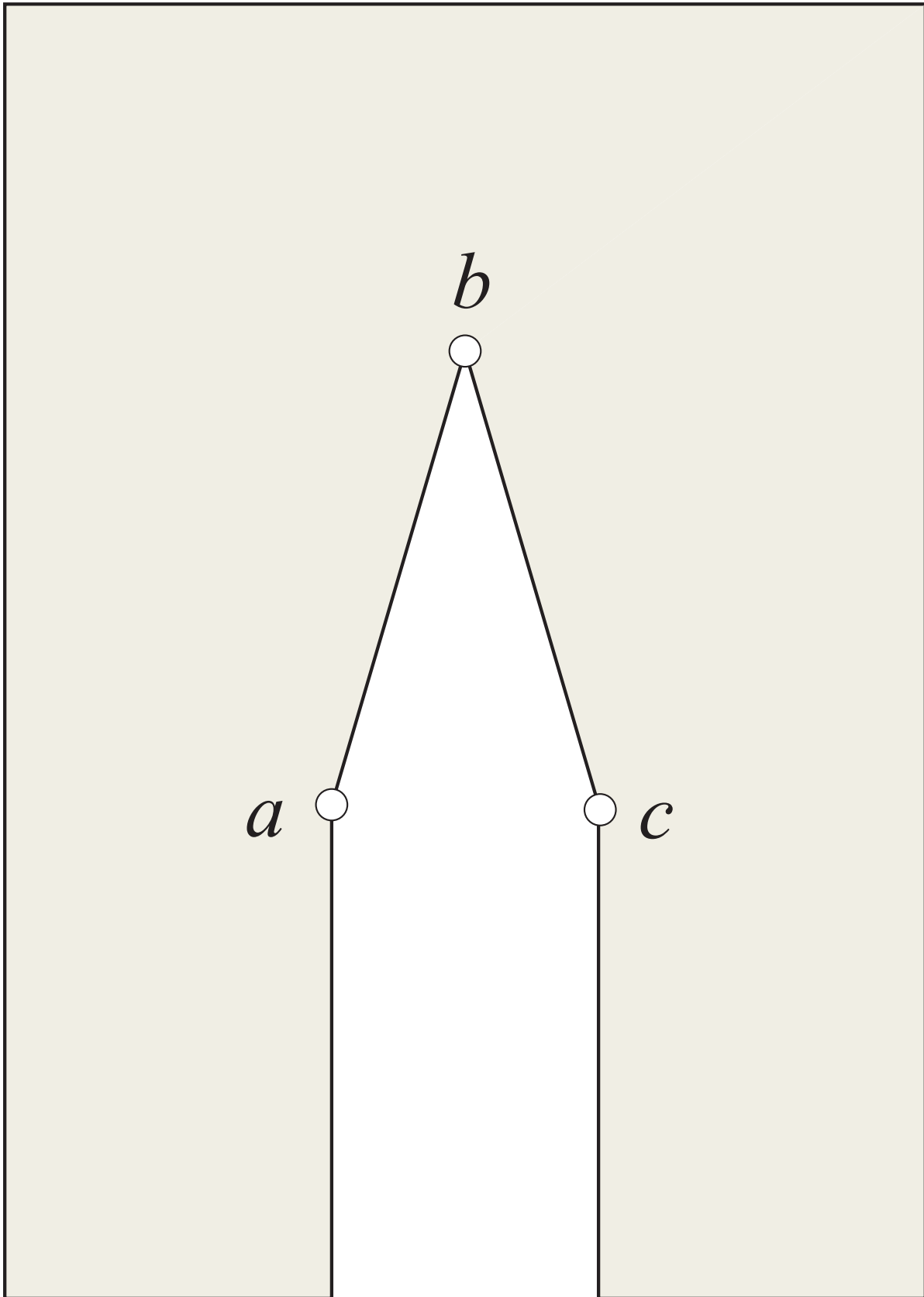
Shape Transformers: Forms That Fold Two Ways
Joseph O'Rourke

Heptahedron?



Shape Transformers: Forms That Fold Two Ways

Joseph O'Rourke



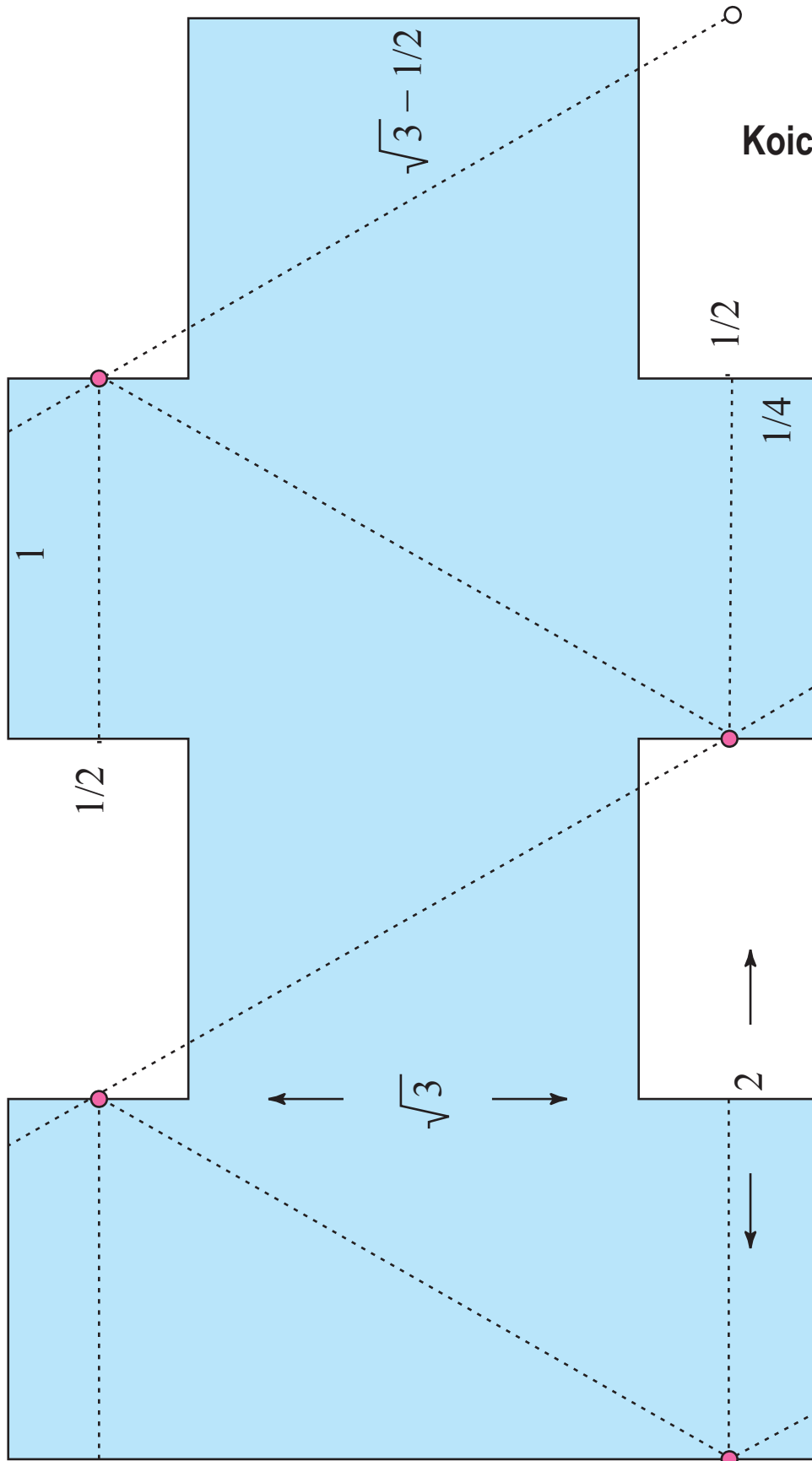
Shape Transformers: Forms That Fold Two Ways
Joseph O'Rourke

Cut along the dotted line to create an 8.5" x 8.5" square to use for folding.

Shape Transformers: Forms That Fold Two Ways

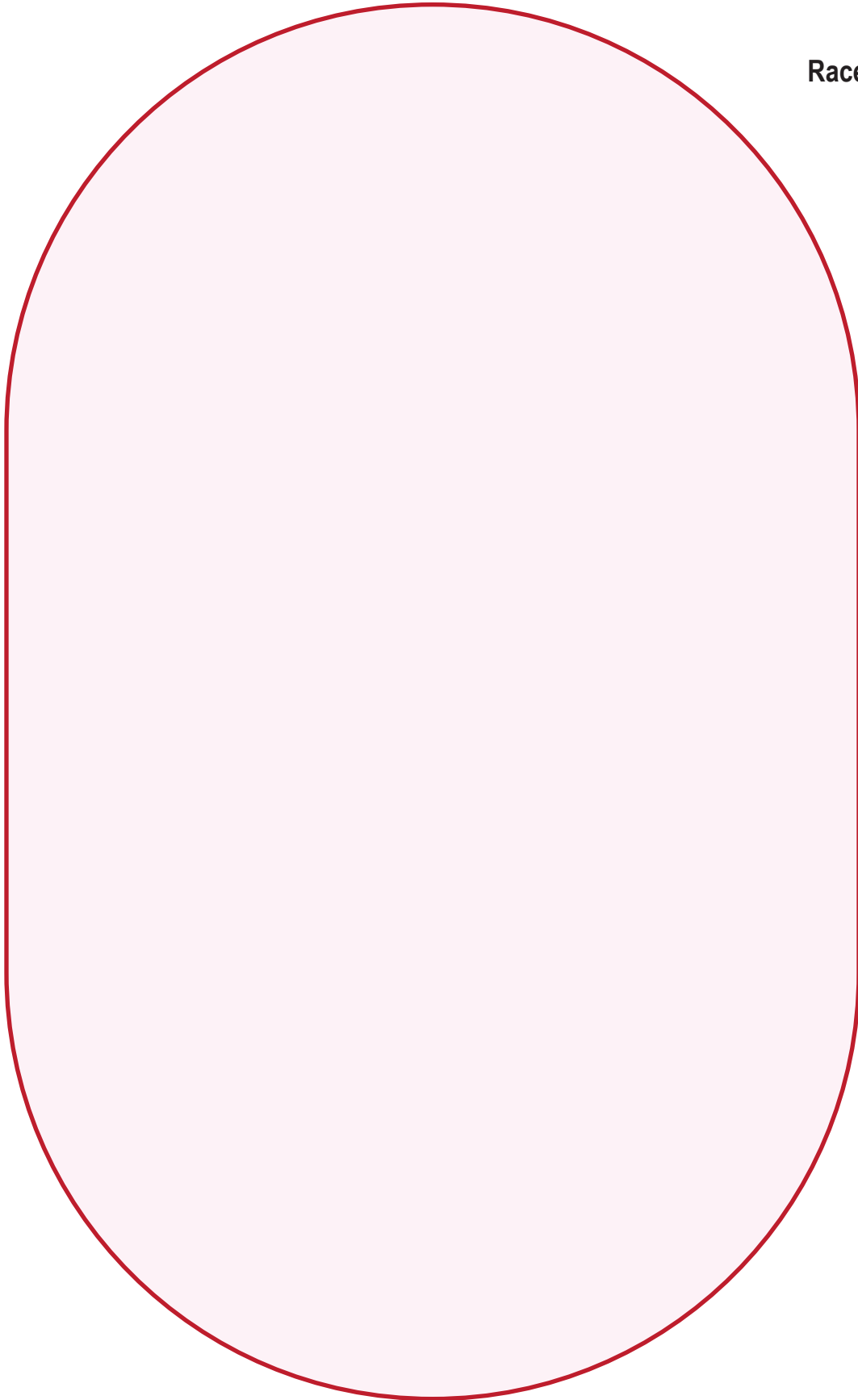
Joseph O'Rourke

Koichi Hirata



Shape Transformers: Forms That Fold Two Ways

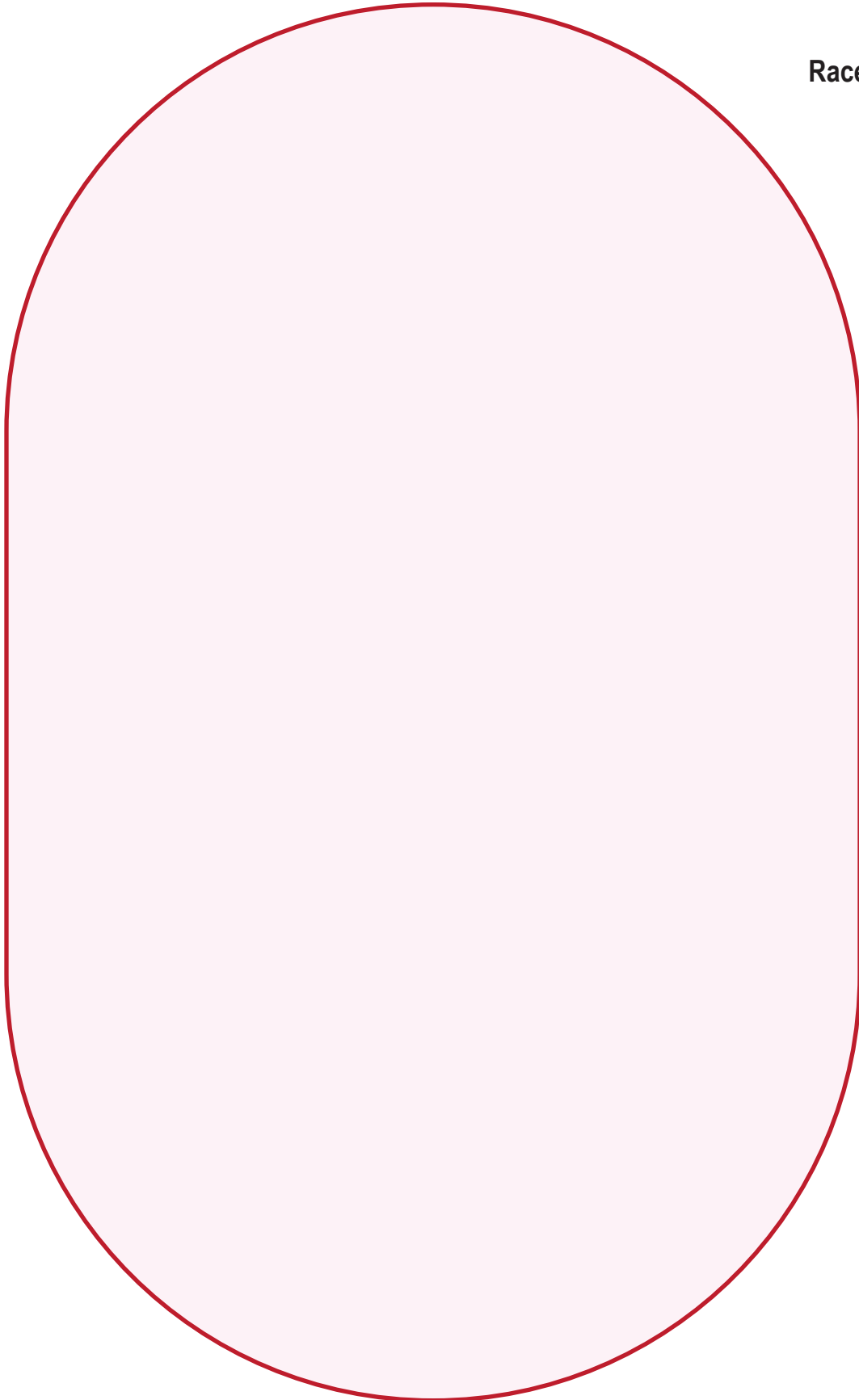
Joseph O'Rourke



Racetrack

Shape Transformers: Forms That Fold Two Ways

Joseph O'Rourke



Racetrack